

# Kapitel 3

## Chapter 3

### Architektur und Design

Architecture and Design

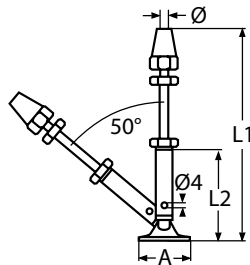
Architecture et design



8763

## Pfostenspanner mit Montageterminal / A4-AISI 316 / Rail turnbuckle

with quick attach terminal / Tendeur de poteau universel avec embout sertissage rapide sur platine articulée



Bestell-Nr. Order no.	Für Pfosten For Stanchion	DS-Ø WR-Ø	L1	L2	A	Box	*€/Stück *€/piece
87634ECKIG	eckig/square	4	150	75	38	1	55,00
87634RUND	rund/round Ø50	4	150	75	38	1	57,00

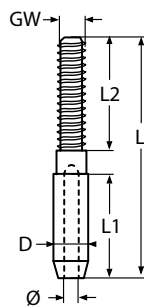
Für Seile: 1x19 – 7x7 – 7x19  
For wire: 1x19 – 7x7 – 7x19

Technische Information Seite 411  
Technical information page 411

8445

## ESS Terminal mit Rechtsgewinde / A4-AISI 316

ESS swage stud, right hand thread / Terminaison fileté, pas à droite

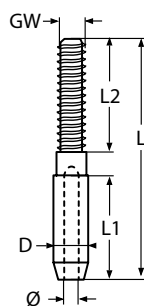


Bestell-Nr. Order no.	DS-Ø WR-Ø	GW	L	L1	L2	D	Box	*€/Stück *€/piece
8445405/3	3	M5	50	18	27	6,4	10	2,00
8445406/4	4	M6	60	25	30	7,5	10	2,50
8445408/5	5	M8	70	31	31	9,0	5	3,00
8445410/6	6	M10	85	37	40	12,5	5	4,00

8446

## ESS Terminal mit Linksgewinde / A4-AISI 316

ESS swage stud, left hand thread / Terminaison fileté, pas à gauche

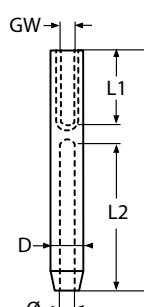


Bestell-Nr. Order no.	DS-Ø WR-Ø	GW	L	L1	L2	D	Box	*€/Stück *€/piece
8446405/3	3	M5	50	18	27	6,4	10	2,30
8446406/4	4	M6	60	25	30	7,5	10	2,80
8446408/5	5	M8	70	31	31	9,0	5	3,30
8446410/6	6	M10	85	37	40	12,5	5	4,30

8449

## ESS Terminal mit Innengewinde, rechts / A4-AISI 316

ESS swage stud with internal thread, right hand thread / Terminaison avec filetage interne, pas à droite



Bestell-Nr. Order no.	DS-Ø WR-Ø	GW	L	L1	L2	D	Box	*€/Stück *€/piece
8449405/3	3	M5	55	20	28	6,4	10	3,00
8449406/4	4	M6	65	22	36	7,5	10	4,00
8449406/5	5	M6	70	22	41	9,0	5	4,50
8449408/6	6	M8	85	25	53	12,5	5	5,70

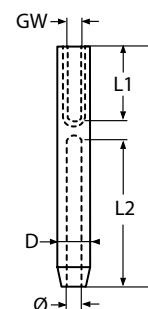


ESS Terminal mit Innengewinde, links / A4-AISI 316

ESS swage stud with internal thread, left hand thread / Terminaison avec filetage interne, pas à gauche

8450

Bestell-Nr. Order no.	DS-Ø WR-Ø	GW	L	L1	L2	D	Box	*€/Stück *€/piece
8450405/3	3	M5	55	20	28	6,3	10	3,30
8450406/4	4	M6	65	22	36	7,5	10	4,30
8450406/5	5	M6	70	22	41	9,0	5	4,80
8450408/6	6	M8	85	25	53	12,5	5	6,00



3

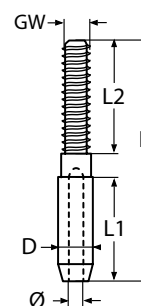
NEW

ESS Terminal mit langem Rechtsgewinde / A4-AISI 316

ESS swage stud with long right hand thread / Ess terminaison filetée avec un long pas à droite

814866

Bestell-Nr. Order no.	DS-Ø WS-Ø	GW	L	L1	L2	D	Box	*€/Stück *€/piece
814866405/3	3	M5	73	18	50	6,3	10	2,50
814866406/4	4	M6	89	25	60	7,5	10	3,00
814866408/5	5	M8	98	31	60	9,0	5	3,50
814866410/6	6	M10	124	37	80	12,5	5	4,50



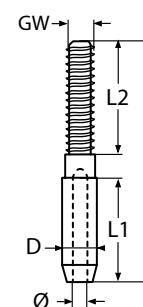
NEW

ESS Terminal mit langem Linksgewinde / A4-AISI 316

ESS swage stud with long left hand thread / Ess terminaison filetée avec un long pas à gauche

814867

Bestell-Nr. Order no.	DS-Ø WS-Ø	GW	L	L1	L2	D	Box	*€/Stück *€/piece
814867405/3	3	M5	73	18	50	6,3	10	2,80
814867406/4	4	M6	89	25	60	7,5	10	3,30
814867408/5	5	M8	98	31	60	9,0	5	3,80
814867410/6	6	M10	124	37	80	12,5	5	4,80

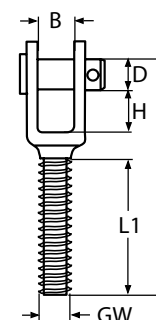


ESS Gabel mit Rechtsgewinde / A4-AISI 316

ESS threaded fork, right hand thread / Embout à chape fixe, pas à droite

8452

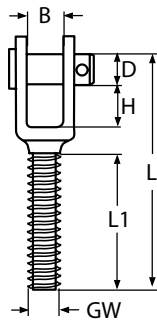
Bestell-Nr. Order no.	GW	L	L1	H	B	D	Box	*€/Stück *€/piece
8452405	M5	40	20	10	8	5	10	2,00
8452406	M6	47	25	10	8	6	10	2,50
8452408	M8	52	25	12	10	8	5	3,00
8452410	M10	72	45	14	12	10	5	4,90



#### 8453

#### ESS Gabel mit Linksgewinde / A4-AISI 316

ESS threaded fork, left hand thread / Embout à chape fixe, pas à gauche

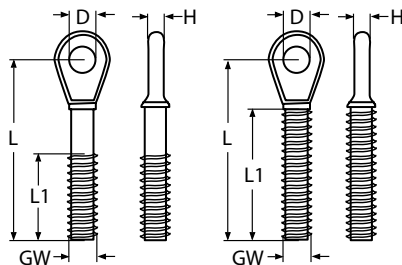


Bestell-Nr. Order no.	GW	L	L1	H	B	D	Box	*€/Stück *€/piece
8453405	M5	40	20	10	8	5	10	2,30
8453406	M6	47	25	10	8	6	10	2,80
8453408	M8	52	25	12	10	8	5	3,30
8453410	M10	72	45	14	12	10	5	5,20

#### 8454

#### ESS Auge mit Rechtsgewinde / A4-AISI 316

ESS threaded eye, right hand thread / Embout à œil fixe, pas à droite



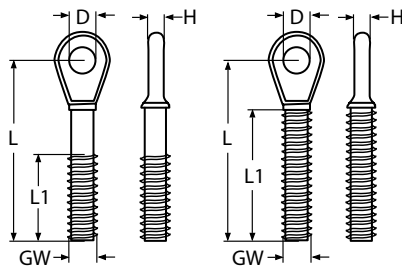
Bestell-Nr. Order no.	GW	L	L1	D	H	Box	*€/Stück *€/piece
8454405	M5	45	23	5,5	3	10	2,00
8454406	M6	47	28	6,5	4	10	2,20
8454408	M8	55	40	8,5	5	5	2,80
8454410	M10	65	47	10,5	6	5	3,10

M5 und M6 mit Teilgewinde. / M5 and M6 with partial thread.  
M8 und M10 mit Vollgewinde. / M8 and M10 with full thread.

#### 8458

#### ESS Auge mit Linksgewinde / A4-AISI 316

ESS threaded eye, left hand thread / Embout à œil fixe, pas à gauche



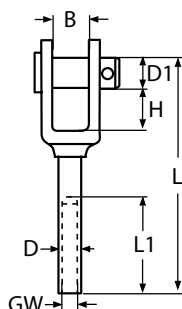
Bestell-Nr. Order no.	GW	L	L1	D	H	Box	*€/Stück *€/piece
8458405	M5	45	23	5,5	3	10	2,30
8458406	M6	47	28	6,5	4	10	2,50
8458408	M8	55	40	8,5	5	5	3,10
8458410	M10	65	47	10,5	6	5	3,40

M5 und M6 mit Teilgewinde. / M5 and M6 with partial thread.  
M8 und M10 mit Vollgewinde. / M8 and M10 with full thread.

#### 8455

#### ESS Gabel mit Innengewinde, rechts / A4-AISI 316

ESS fork with internal thread, right hand thread / Embout à chape fixe avec filetage interne, pas à droite



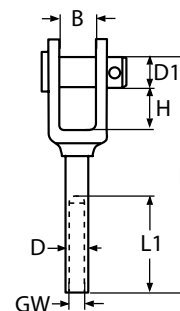
Bestell-Nr. Order no.	GW	L	L1	D	D1	H	B	Box	*€/Stück *€/piece
8455405	M5	55	27	7,5	5	10	8	10	7,00
8455406	M6	60	30	8,0	6	10	9	10	8,00
8455408	M8	65	31	12,0	8	12	10	5	9,00
8455410	M10	75	40	14,0	10	12	12	5	10,00

ESS Gabel mit Innengewinde, links / A4-AISI 316

ESS fork with internal thread, left hand thread / Embout à chape fixe avec filetage interne, pas à gauche

8456

Bestell-Nr. Order no.	GW	L	L1	D	D1	H	B	Box	*€/Stück *€/piece
8456405	M5	55	27	7,5	5	10	8	10	7,50
8456406	M6	60	30	8,0	6	10	9	10	8,50
8456408	M8	65	31	12,0	8	12	10	5	9,50
8456410	M10	75	40	14,0	10	12	12	5	10,50



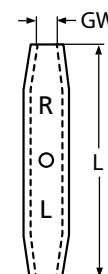
3

ESS Spannschlossmutter / A4-AISI 316

ESS body of turnbuckle / Cage fermé à ridoir

8457

Bestell-Nr. Order no.	GW	L	Box	*€/Stück *€/piece
8457405	M5	55	10	2,80
8457406	M6	65	10	3,50
8457408	M8	70	5	4,00
8457410	M10	85	5	6,00

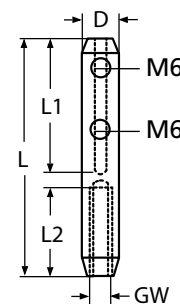


ESS Schraubterminal mit Innengewinde / A4-AISI 316

ESS terminal with internal thread / Serre câble avec filetage interne, droite ou gauche

8451

Bestell-Nr. Order no.	DS-Ø WR-Ø	GW	L	L1	L2	D	Box	*€/Stück *€/piece
8451434RE	3+4	M6 rechts/right	80	45	30	12	5	7,90
8451434LI	3+4	M6 links/left	80	45	30	12	5	7,90
8451405RE	5	M6 rechts/right	80	45	30	12	5	7,90
8451405LI	5	M6 links/left	80	45	30	12	5	7,90



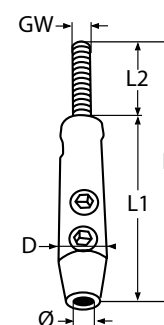
NEW

ESS Schraubterminal mit Gewindestift / A4-AISI 316

ESS terminal with set screw / Serre câble avec filetage externe

814868

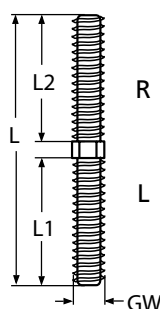
Bestell-Nr. Order no.	DS-Ø WS-Ø	GW	L	L1	L2	D	Box	*€/Stück *€/piece
814868405/3	3	M5	87	53	34	11	5	6,50
814868406/4	4	M6	95	58	37	13	5	7,50
814868406/5	5	M6	102	65	37	14	2	8,00
814868408/6	6	M8	118	73	45	16	2	9,50



8466

## ESS Gewindestück, rechts + links / A4-AISI 316

ESS stud bolt, right + left hand thread / Terminaison fileté, pas à droite + pas à gauche

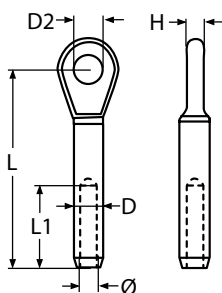


Bestell-Nr. Order no.	GW	L	L1	L2	Box	*€/Stück *€/piece
8466405	M5	65	30	30	10	1,00
8466406	M6	65	30	30	10	1,10
8466408	M8	65	30	30	5	1,60
8466410	M10	85	40	40	5	2,90
8466412	M12	105	50	50	5	4,60

8469

## ESS Augterminal / A4-AISI 316

ESS swage eye terminal / Embout à œil à sertir inox

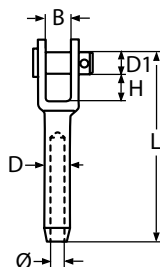


Bestell-Nr. Order no.	DS-Ø WR-Ø	L	L1	D	D2	H	Box	*€/Stück *€/piece
846943	3	40	18	6,4	6,5	5	10	2,50
846944	4	52	24	7,5	8,5	6	10	3,00
846945	5	62	30	9,0	9,5	7	5	3,70
846946	6	75	36	12,5	13,0	8	5	5,80

8447

## ESS Gabelterminal / A4-AISI 316

ESS swage fork terminal / Embout à chape fixe à sertir



Bestell-Nr. Order no.	DS-Ø WR-Ø	L	D	D1	B	H	Box	*€/Stück *€/piece
844743	3	55	6,4	5	8	10	10	3,50
844744	4	65	7,5	6	8	10	10	4,00
844745	5	70	9,0	8	10	12	5	5,00
844746	6	85	12,5	10	12	14	5	6,00





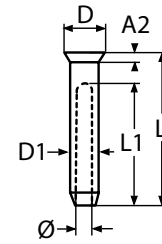


ESS Senkkopfterminal / A4-AISI 316

ESS swage cone terminal / Terminaison à tête plate à sertir

8459

Bestell-Nr. Order no.	DS-Ø WR-Ø	L	L1	D	D1	A2	Box	*€/Stück *€/piece
845943	3	34	27	8,0	6,4	2	10	1,40
845944	4	43	35	9,5	7,5	2	10	2,10
845945	5	50	40	13,0	9,0	3	5	2,90
845946	6	64	50	16,5	12,5	3	5	4,80



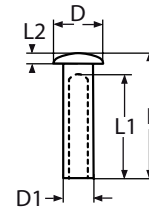
3

ESS Linsenkopfterminal, dünnwandig / A4-AISI 316

ESS swage dome head terminal, thin-walled / Terminaison à tête cylindrique bombée à sertir

8448

Bestell-Nr. Order no.	DS-Ø WR-Ø	L	L1	L2	D	D1	Box	*€/Stück *€/piece
844843	3	25	18	2,0	9	5,5	10	2,50
844844	4	30	24	2,0	11	6,5	10	3,00
844845	5	35	28	2,5	13	7,5	5	3,50
844846	6	40	32	3,0	16	9,0	5	4,00



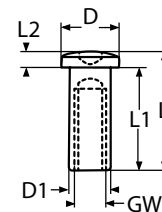
Terminal muß mit einer Press- oder Walzbackengröße kleiner verarbeitet werden.  
Terminals must be pressed or swaged with jaws one size smaller.

ESS Linsenkopfhülse mit Innengewinde / A4-AISI 316

ESS dome case nut with internal thread / Terminaison TBHC avec filetage interne

8464

Bestell-Nr. Order no.	GW	L	L1	L2	D	D1	Box	*€/Stück *€/piece
8464405	M5	25	18	4	12	7,5	10	3,00
8464406	M6	30	24	4	12	8,0	10	3,50
8464408	M8	35	28	5	16	12,0	5	4,00
8464410	M10	40	32	6	20	14,0	5	5,00

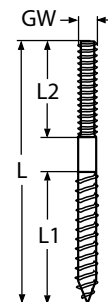


Stockschraube mit Rechtsgewinde / A4-AISI 316

Dowel screw with right hand thread / Goujon double filet pas à droite

8515

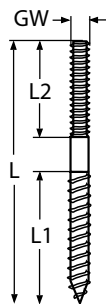
Bestell-Nr. Order no.	GW	L	L1	L2	Box	*€/Stück *€/piece
8515405	M5	80	43	32	5	1,50
8515406	M6	90	50	35	5	1,80
8515408	M8	130	65	55	5	3,20
8515410	M10	150	75	55	5	4,50



8516

## Stockschraube mit Linksgewinde / A4-AISI 316

Dowel screw with left hand thread / Goujon double filet pas à gauche

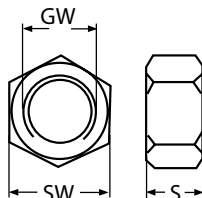


Bestell-Nr. Order no.	GW	L	L1	L2	Box	*€/Stück *€/piece
8516405	M5	80	43	32	5	1,80
8516406	M6	90	50	35	5	2,10
8516408	M8	130	65	55	5	3,50
8516410	M10	150	75	55	5	4,80

8468

## Wantenspanner Kontermutter, rechts + links / A4-AISI 316

Counter nut for turnbuckle / Ecrous pour ridoir



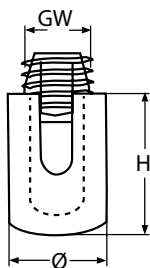
NEW

Bestell-Nr. Order no.	GW	Rechts Right	Links Left	SW	S	Box	*€/Stück *€/piece
84684R04/L04	M4	R4	L4	7	3,2	10	0,20
84684R05/L05	M5	R5	L5	8	4,0	10	0,25
84684R06/L06	M6	R6	L6	10	5,0	10	0,30
84684R08/L08	M8	R8	L8	10	5,0	10	0,60
84684R10/L10	M10	R10	L10	13	6,5	10	0,75
84684R12/L12	M12	R12	L12	17	8,0	10	1,10
84684R14/L14	M14	R14	L14	22	11,0	5	1,50
84684R16/L16	M16	R16	L16	24	13,0	5	2,80
84684R20/L20	M20	R20	L20	27	15,0	5	4,10

8424

## Kreuzklemme geschlossen / A4-AISI 316

Cross wire rope clip with closed base / Serre câble en croisillons inox

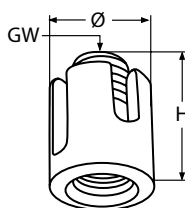


Bestell-Nr. Order no.	DS-Ø WR-Ø	GW	Ø	H	Box	*€/Stück *€/piece
842443	3	M12	20	19	10	5,80
842444	4	M12	20	21	10	5,90
842445	5	M12	20	23	5	6,00
842446	6	M12	20	25	5	7,00

814817

## Kreuzklemme offen / A4-AISI 316

Cross wire rope clip with open base / Serre câble en croisillon inox



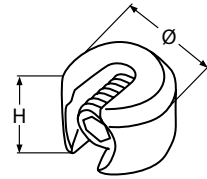
Bestell-Nr. Order no.	DS-Ø WR-Ø	GW	Ø	H	Box	*€/Stück *€/piece
81481743	3	M10	17	19	10	6,20
81481744	4	M12	20	21	10	8,20
81481745	5	M12	20	23	5	8,50

**Klemmstopper / A4-AISI 316**

Wire rope stopper / Bague d'arrêt pour câble

**814722**

Bestell-Nr. Order no.	DS-Ø WR-Ø	GW	Ø	H	Box	*€/Stück *€/piece
814722402	2	M4	10	8	10	2,50
814722403	3	M6	15	12	10	2,90
814722404	4	M8	15	12	10	3,40
814722405	5	M10	20	15	10	3,50
814722406	6	M10	20	15	10	3,60



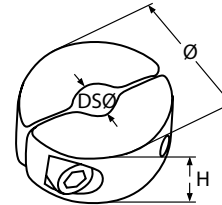
3

**Drahtseil-Klemmring / A4-AISI 316**

Wire rope clamp ring / Serre câble 2 parties (2 vis)

**814700**

Bestell-Nr. Order no.	DS-Ø WR-Ø	GW	Ø	H	Box	*€/Stück *€/piece
814700402	2	M3	15	10	10	3,30
814700403	3	M3	15	10	10	3,70
814700404	4	M3	15	10	10	3,80
814700405	5	M3	20	10	10	4,10
814700406	6	M3	20	10	10	4,20
814700408	8	M4	20	12	10	4,60

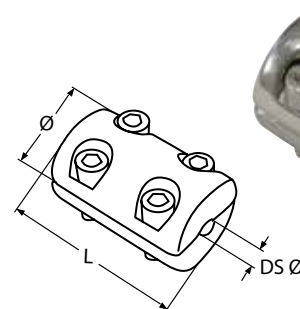


**Drahtseil-Klemmring, schwere Ausführung / A4-AISI 316**

Wire rope clamp ring, heavy duty / Serre câble 2 parties (4 vis)

**814701**

Bestell-Nr. Order no.	DS-Ø WR-Ø	GW	Ø	L	Box	*€/Stück *€/piece
814701403	3	M4	22	27	5	6,50
814701404	4	M4	22	27	5	6,60
814701405	5	M5	28	42	2	13,20
814701406	6	M5	28	42	2	13,40
814701408	8	M5	28	42	2	13,60

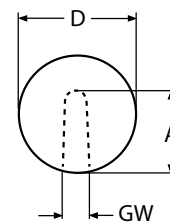


**Massivkugel mit Innengewinde, blank / A2-AISI 304**

Massive ball with internal thread, blank / Boule massive mate avec filetage intérieur

**8462**

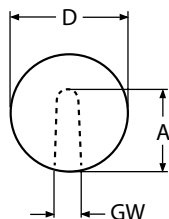
Bestell-Nr. Order no.	D	GW	A	Box	*€/Stück *€/piece
8462215	15	M6	6	10	5,50
8462220	20	M6	17	10	6,30
8462225	25	M6	17	10	9,90
8462230	30	M6	18	10	15,00
8462240	40	M8	24	5	25,00
8462250	50	M8	24	5	39,90



8463

**Massivkugel mit Innengewinde, poliert / A2-AISI 304**

Massive ball with internal thread, polished / Boule massive polie avec filetage intérieur



Bestell-Nr. Order no.	D	GW	A	Box	*€/Stück *€/piece
8463215	15	M6	6	10	8,50
8463220	20	M6	17	10	10,50
8463225	25	M6	17	10	14,00
8463230	30	M6	18	10	19,00
8463240	40	M8	24	5	32,80
8463250	50	M8	24	5	55,00

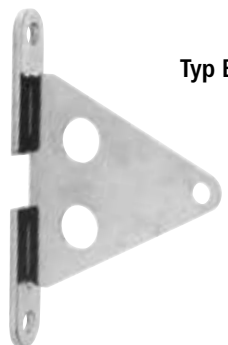
8499

**Kombi-Wandkonsole / A4-AISI 316**

Combination wall bracket / Support mural pour câble

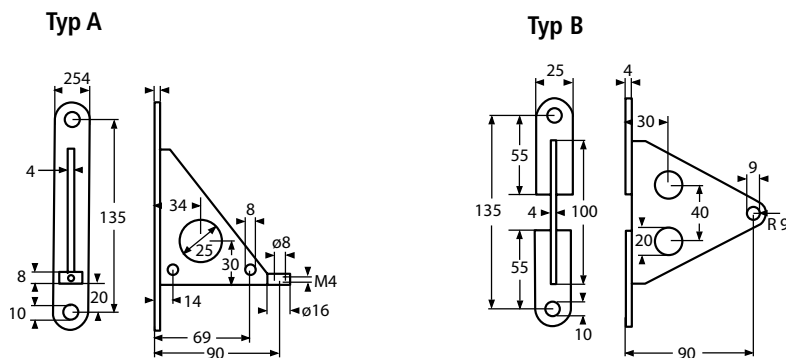


Typ A



Typ B

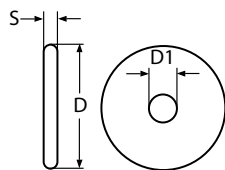
Bestell-Nr. Order no.	Typ Type	Abmessungen Dimensions	Box	*€/Stück *€/piece
84994A135_90	A	siehe technische Zeichnung see technical drawing	1	19,50
84994B135_90	B	siehe technische Zeichnung see technical drawing	1	19,50



8502

**Wandkonsolen - Grundplatte / A4-AISI 316**

Ground plate for wall bracket / Rondelle plate extra



Bestell-Nr. Order no.	D	D1	S	Box	*€/Stück *€/piece
8502458	58	14	6	10	3,00